



**SAWING SYSTEMS INC.**  
KNOXVILLE, TENNESSEE

SUBJECT 541 Machine  
Assembly of Standard Spindle

DATE 05/26/99

BY DLL CHKD. BY \_\_\_\_\_

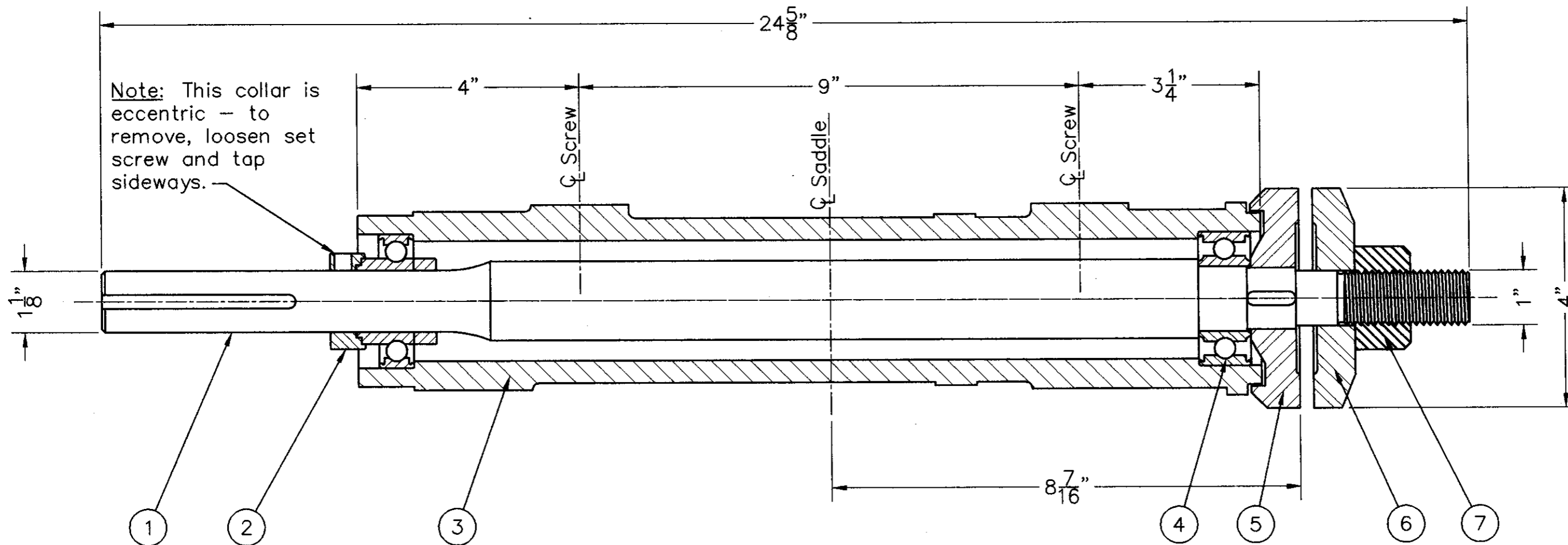
JOB NO. \_\_\_\_\_

REQ'D. \_\_\_\_\_

DWG. NO. B-4105-1 SCALE 1:2

Rev. "A" Redraw in CAD, Original Drawing Date was 10/25/82 5/99

Note: Bearings in this spindle are sealed and do not require re-lubrication.



Item	Qty.	Description	Part No.
7	1	Spindle Clamp Nut	A-4147-1
6	1	Removable Saw Collar	A-4149-1
5	1	Permanent Saw Collar	A-4150-1
4	1	Spindle Front Bearing	A-3900-3
3	1	Spindle Housing	B-4103-1
2	1	Spindle Rear Bearing	A-3900-13
1	1	Spindle Shaft	B-4104-1